



GENESEE
GLOBAL
GROUP

METAL:

FORMING

MACHINING

WELDING

ASSEMBLY





GENESEE
GLOBAL
GROUP

Project Support from Start to Finish

Project Analysis

We start with an intelligent dialogue to identify your project needs and discuss the most efficient way to meet them.



Prototyping

Genesee Global's prototyping capabilities are a perfect match for short-run complex projects or tight tolerance prototyping.



Component Sourcing

Whether it is electrical, plastic or other unique parts, Genesee Global will source to meet your specifications.



Assembly

After component sourcing and production, Genesee Global's unique assembly abilities can help complete your project in one smooth process.



Quality

Our Quality Assurance Lab will monitor and test your products according to our ISO 9001:2015 quality system.



Design for Manufacturability

Our design for manufacturability philosophy applies expertise, imagination and advanced manufacturing processes to address all requirements.



Tooling

Our in-house tooling department quickly turns vision into reality and optimizes your design for manufacturability.



Production

Genesee Global brings together the right combination of machining, welding, tooling, and forming to produce quality parts.



Finishing

With our in-house painting and powder coating shop, plus partner finishing centers, Genesee Global can finalize your parts with these time-tested collaborators.



Customer Partnership

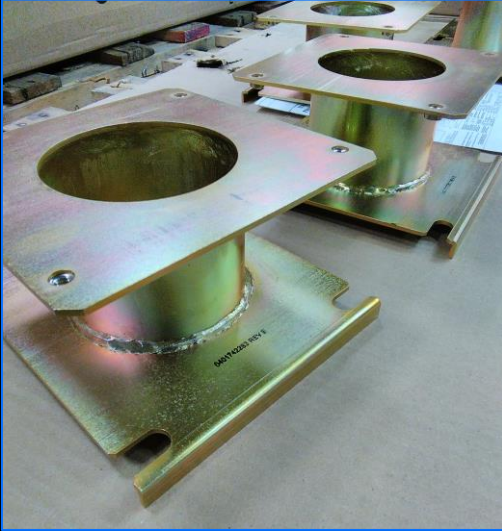
We easily integrate into your supply-chain infrastructure for seamless reliable support anywhere at anytime. Engineers and service reps are available from start to finish.



Genesee Global Group
975 John Street
West Henrietta, NY 14586
Sales@geneseeglobal.com



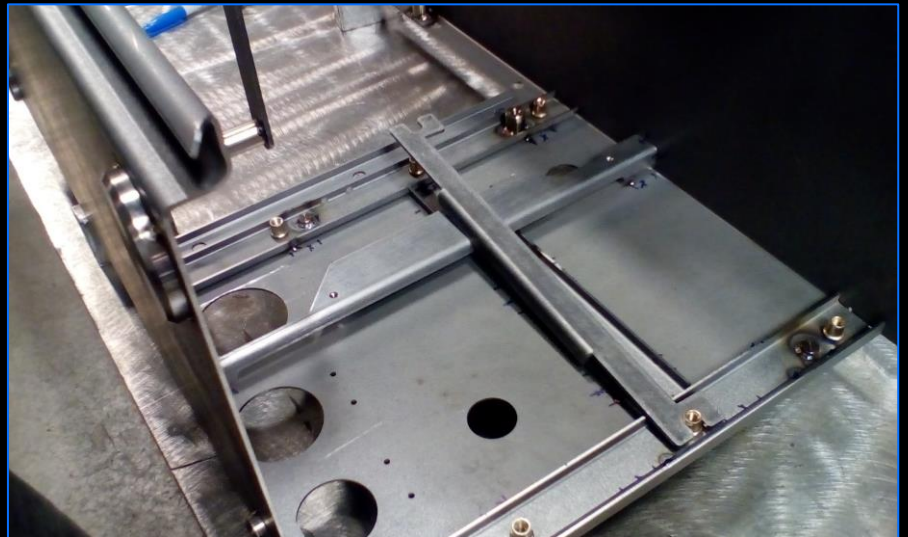
FORMING



With a wide array of advanced computer-controlled metal form processing equipment, Genesee Global brings the right combination of materials, machinery, tooling, and experience to support your most critical business strategies. Our world-class manufacturing facility is designed to maximize throughput and repeatability to meet demanding market challenges.

Capabilities:

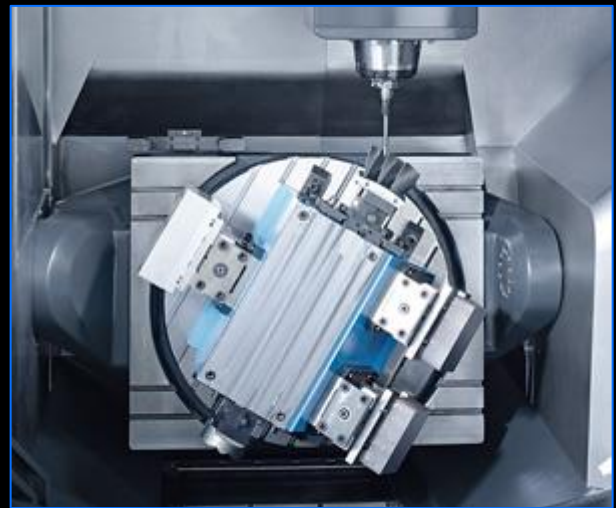
- Shear
- Laser
- Turret
- Punch Press
- Press Brake
- Timesave/Deburr
- Countersink
- Machining
- Welding
- Tooling and Fixture Building



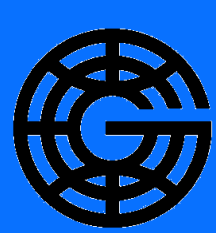


MACHINING

Genesee Global specializes in 5-axis and vertical machining and consistently exceeds customer expectations.



- Very tight hole to hole tolerance
- Tool change 4-7 seconds chip to chip
- Various materials, both metal and nonmetal
- Automated pallet changing systems help provide flexibility and shorter lead-times
- Vast network of casting houses increase manufacturability and decrease cost



WELDING



Genesee Global uses a range of welding approaches including our state-of-the-art robotic technology and numerous certifications for different applications. With skills in mapping, certification and testing, we look forward to every welding challenge.



Robotic Welding – Provides high-speed, high precision options for higher volume jobs.

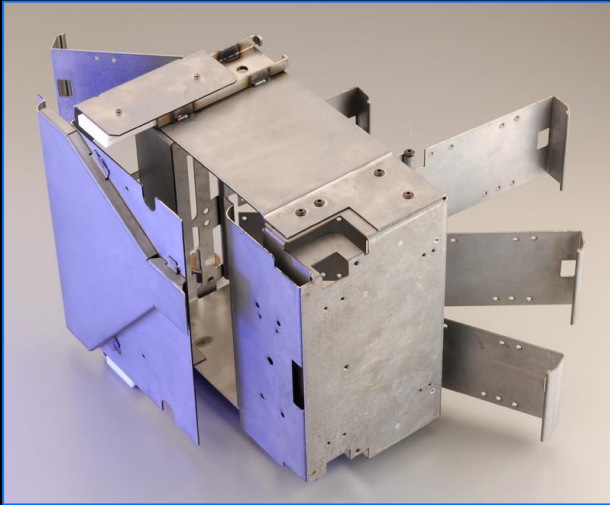
Certifications – D1.1 Structural, D1.2 Aluminum, D1.3 Steel, D1.6 Stainless. As well as visual certifications and local CWIs to assist with any job specific requirements.





ASSEMBLY

Genesee Global will deliver your products to market faster thanks to skillful supply chain management and extensive assembly expertise. We offer a wide range of capabilities to meet your unique assembly requirements.



Our ERP system helps make a seamless process, proficiently managing timelines, material acquisitions and product updates every step of the way.



FINAL FINISHING



Genesee Global's in-house paint shop and extensive network of vendors allows us to finish your projects completely. We deliver your final product straight to your dock, on time and in your preferred packaging.

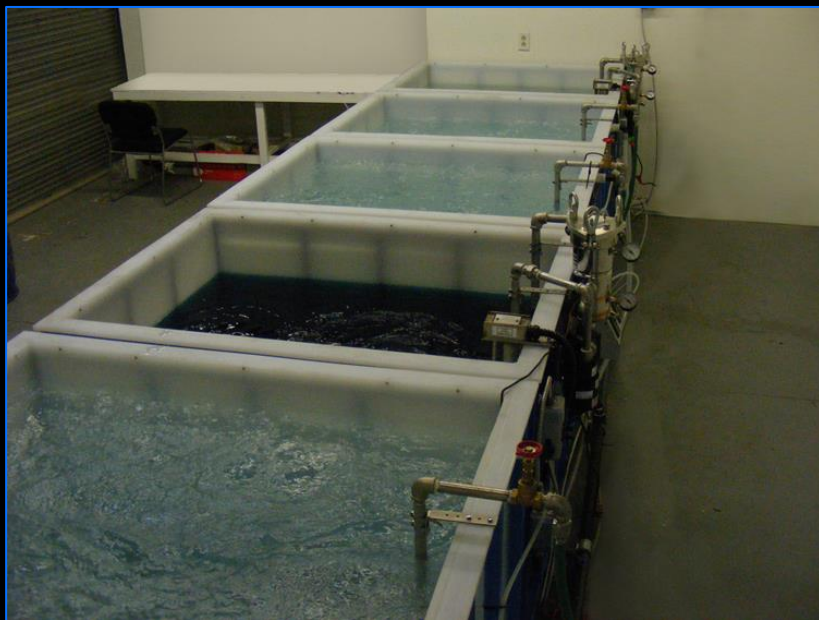


Parts can be painted, plated, powder coated, iridite chromated, silkscreened and more, all to your specifications.



SURFACE PREPEARATION & CLEANING

At Genesee Finishing,
we are masters of part
preparation and cleaning.
Specializing in
aluminum pretreatment
and stainless passivation,
we can handle metal or
plastics on our 5-stage
pretreatment line.



Our work meets TT-C-490G
Federal Specifications.





FINISHING & COATING

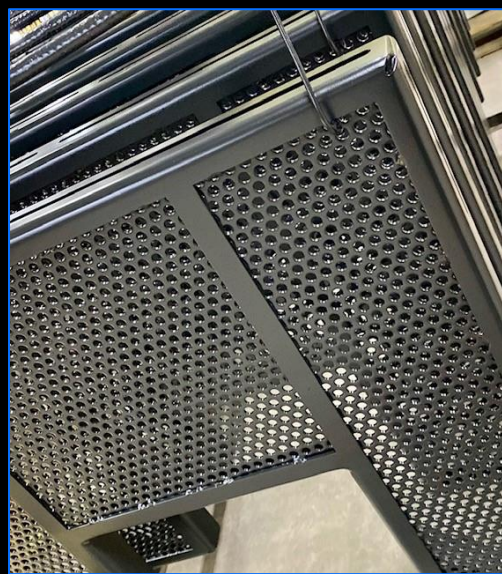


Genesee Finishing's paint and coating processes allow us to complete your parts in-house, saving lead time and continuing our high-quality standards through final finish.



Genesee Finishing capabilities include:

- Wet paint products (Powder Coating, & Epoxy Paint)
- Plastics (Cleaning, filling, & painting)
- Media Blast (Walk-in blast room, Steel grit & aluminum oxide)
- Masking (High temp, plugs, caps, & custom die cut masking)





INDUSTRIES & CERTIFICATIONS

Genesee Global works with many industries, including but not limited to the following:

- Defense / Military
- Transit/Rail
- Aerospace
- Medical
- Filtration Systems
- Environmental
- Energy
- Radio Frequency
- Kiosks/Point of Sale Systems
- Office Equipment/Printers



- ISO 9001:2015
- Various Standards, including ASTM and DIN
- RoHS Compliant
- DFARS Compliant
- PMA.org
- FMA.org
- RTMA.org
- AWS Certifications and Standards
- ITAR Certified
- UL Certified